

## Specification sheet LX1881

### Parapet drainage Series 79 RAINSTAR® as rectangular spout

**Emergency drainage**

**Gravity flow**

**Silent**

**Discharge rate: 6,4 l/sec**

**Water height: 75 mm**

**Roof penetration: 106 mm**

**Diameter: DN 100**

**LX-Number: LX 1881**

**Weir height: 35 mm**

**Drain: ventilated**

**Downpipe: ventilated**

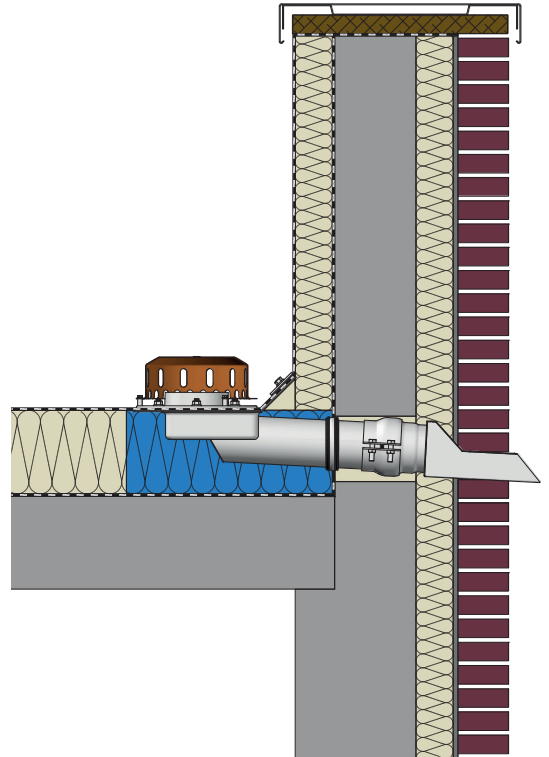
**Downpipe height: 0 m**

**Drainage: on floor**

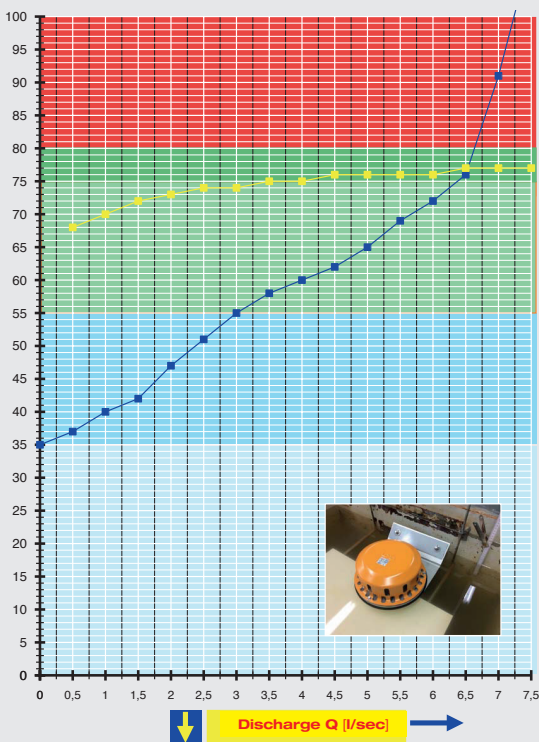
**Flange form: Clamping flange**

#### LX 1881 Piece list

- 1 x Art.-No. 01371.100X, LORO-X RAINSTAR® Parapet drain
- 1 x Art.-No. 01401.100X, LORO-X Pipe with one socket
- 1 x Art.-No. 13235.100X, LORO-X Sliding flange
- 1 x Art.-No. 15196.100X, LORO-X Rectangular emergency spout
- 1 x Art.-No. 00911.100X, LORO-X Sealing element
- 1 x Art.-No. 00986.000X, LORO-X Lubricant

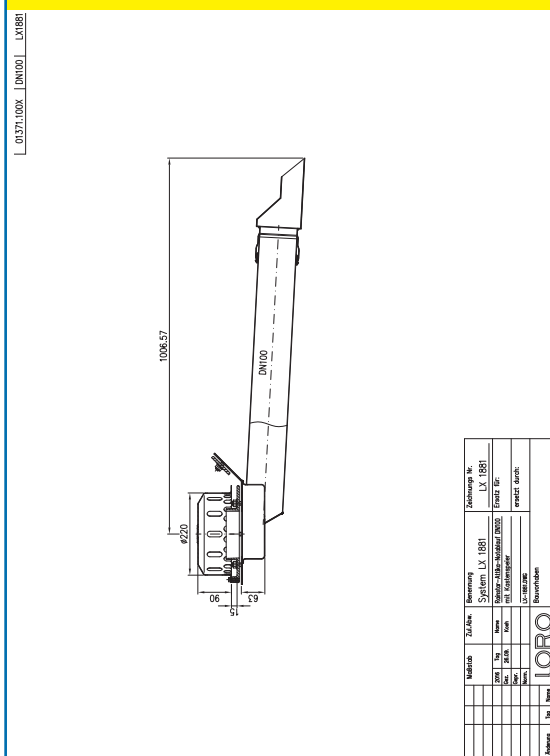


#### hQ - Head Discharge curve



#### Systempower

#### CAD



#### Systemshape

Water height	mm	15	20	25	30	35	40	45	50	55	60	65	70	75	80	85	90	95
Discharge	l/sec	-	-	-	-	-	1,0	1,8	2,4	3,0	4,0	5,0	5,7	6,4	6,6	6,8	7,0	7,1
<b>Silent</b>																		

# LORO-X Rectangular Emergency spout

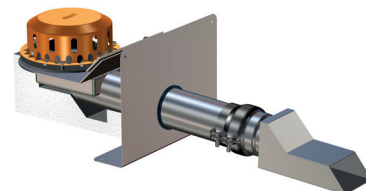
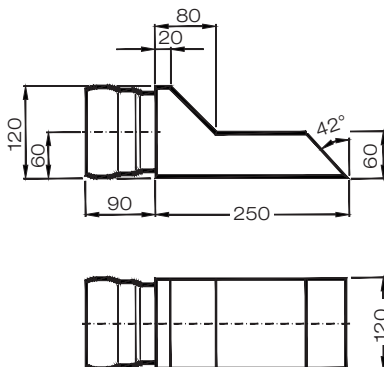
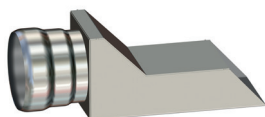
DN 100

**LX1881-20X**

**Series 79 (RB)  
Rectangular spout**

Art.-No. 15198.100X

Weight: 1,1 kg



**Series 79 (RB)**

Drain Art.-No. 01371.100X

Weight: 6,9 kg

**with clamping flange 45°**  
fo bituminous roofing sheets

